

**Bluegrass Tolars 2012 Retreat
Lake Cumberland State Park
October 17-21, 2012**



**Lights, Camera, Action
You're A Star**

**Come Join the Fun!!
Lessons For All Levels
Make It/Take It
Silent Auction
Art Exhibit
Banquet**

Bluegrass Tolars Retreat Schedule At A Glance

Wednesday, October 17 – Set Up

Wednesday Evening - Early Bird Registration

Thursday, October 18

7:30-8:30 AM Registration
 9:00-Noon Classes
 Noon-1:00 PM Lunch (On your own)
 1:00-5:00 PM Classes
 5:00-6:00 PM Dinner (On your own)
 6:00-10:00 PM Make It/Take It

Friday, October 19

7:30-8:30 AM Registration
 9:00-Noon Classes
 Noon-1:00 PM Lunch (On your own)
 1:00-5:00 PM Classes
 5:00-6:00 PM Dinner (On your own)
 6:00-10:00 PM Make It/Take It

Saturday, October 20

7:30-8:30 AM Registration
 9:00-Noon Classes
 Noon-1:00 PM Lunch (On your own)
 1:00-5:00 PM Classes
 5:00-6:00 PM Rest/Prepare for Banquet
 6:00-8:00 PM Banquet
 8:00-10:00 PM Finish Projects/Clean Up

Sunday, October 21 – Check Out



Room Reservations: Each person is responsible for making her own room reservation. There is an additional charge for more than 2 people in a room. For reservations, call 1-800-325-1709. A block of rooms is being held for us, so let them know that you are with Bluegrass Tolars.

Early Bird Registration: Wednesday evening. At that time you may pick up your nametag and goody bag. Hope to see you there!

Country Store: Time for fall cleaning! Please bring those used books, magazines, and surfaces that you have been meaning to finish to contribute to our country store. One painter's trash is another's treasure. Any other new/slightly used items that would be a delight for someone else, please, bring to our country store.

Basket Silent Auction. If you or a friend or several friends would like to make up a basket, that would be wonderful. You decide on the theme, size, cost. Please make a list of the items inside the basket to clip to the outside so people can read what is included in the basket. This is one of our main fundraisers.

Make It Take It Tables: Tables will be available for those who wish to make-it, take-it projects for our event. Please indicate at the bottom of your registration form the number of tables you wish.

Art Exhibit: You are invited to bring your artwork for display and sale. Due to limited space, there is a 5 piece limit. Please provide easels for your work and price those items that are for sale.

Class Fees: Class fees are paid directly to the teacher. If you register for a class, you are responsible for paying for the class. You may sell the class to someone else, but you may not drop the class without paying the class fee. If not enough members register for a particular class, the teacher has the option to drop the class.

Class Schedule

2012 Bluegrass Toler's Retreat, Lake Cumberland State Park

Thursday, October 18, 2012			
7:30 - 8:30 AM	Registration		
9:00 AM - 4:00 PM CLASSES AND LUNCH	<p>#1 Jude Creager "Desert Surprise" BEG/INT Watercolor - 6 hours Materials Provided: 16 X 20 paper, paint, palette, detailed instructions, photo, mat <u>Need to bring:</u> Brushes: #6, #8, #10, #12 rounds with good points; paper towels; two water containers; tissues helpful Class and Surface Fee: \$45</p>	<p>#3 Byrle Thomas "Canning Day" BEG/INT Acrylic - 6 hours Materials Provided: 16 X 20 canvas, paint, pattern, photo <u>Need to bring:</u> Usual acrylic supplies Class and Surface Fee: \$25</p>	<p>#5 Debbie McQueary "Snow" BEG Acrylic - 6 hours Materials Provided: 24 1/2 X 7 1/8 wooden framed board, paint, pattern, photo <u>Need to bring:</u> Usual acrylic supplies, including variety of flats, rounds, and liner brushes. Class and Surface Fee: \$20</p>
			
	<p>#2 Gayle Laible, CDA "Lemonade...Anyone" INT Watercolor - 6 hours Materials Provided: 7 X 12 paper, paint, palette, complete pattern, photo, mat (11 X 16 double mat plus backerboard) <u>Need to bring:</u> Brushes: #2, #4, #6, #8, #10 rounds; 1/4", 1/2", 3/4" flat; #2 script liner; paper towels; two water containers. Class and Surface Fee: \$50</p>	<p>#4 Valerie Bernardino "A Chorus of Tulips" INT Watercolor - 6 hours Materials Provided: 15 X 20 surface, paint, pattern, photo <u>Need to bring:</u> Usual watercolor supplies Class and Surface Fee: \$50</p>	<p>#6 Mina McLean (Dent Certified Artist) "Newberry Barn" BEG/INT Oil - 6 hours Materials Provided: 16 X 20 surface, paint, pattern, photo <u>Need to bring:</u> Usual oil supplies; table top easel; Brushes: #6 flat bristle, #8 flat sable, #1 sable liner, palette knife Class and Surface Fee: \$45 See page 7 for deals on paints and brushes.</p>
			
5:00 - 10:00 PM	Dinner Break and Make It/Take It		

Class Schedule

2012 Bluegrass Toler's Retreat,
Lake Cumberland State Park

Friday, October 19, 2012

<p>7:30 - 8:30 AM</p>	<p>Registration</p>		
<p>9:00 AM - 4:00 PM CLASSES AND LUNCH</p>	<p>#7 Valerie Bernardino "Summer's End" BEG Watercolor – 6 hours Materials Provided: 11 X 15 surface, paint, pattern, photo <u>Need to bring:</u> Usual watercolor supplies Class and Surface Fee: \$45</p>	<p>#9 Debbie McQueary "Early Risers" INT Acrylics – 6 hours Materials Provided: 12 ½ wooden plate, paint, pattern, photo <u>Need to bring:</u> Usual acrylic supplies, including various flats, rounds, and liner brushes Class and Surface Fee: \$20</p>	<p>#11 Mina McLean "Horse Head" by Ann Kullberg BEG Color Pencil – 6 hours Materials Provided: 11 X 14 Mitentes paper, pattern, photo, board to work on <u>Need to bring:</u> Kneaded eraser, whit plastic, graphite, stylus, prismacolor pencils Class and Surface Fee: \$30 See page 7 for deals on color pencils.</p>
			
	<p>#8 Jude Creager "Plum Pretty" BEG/INT Oil – 6 hours Materials Provided: 8 X 12 panel, paint, pattern, photo, paper towels, turp, palette <u>Need to bring:</u> Brushes: ¼ angle, 3/8 angle, ½ angle, 10/0 liner, assorted small soft mops, large soft mops Class and Surface Fee: \$34</p>	<p>#10 Gayle Laible, CDA "Pumpkin Party" INT Watercolor – 6 hours Materials Provided: 10 ½ X 20 paper, paint, palette, complete pattern, photo, mat (16 X 20 double mat plus backerboard) <u>Need to bring:</u> Brushes: #2, #4, #6, #8, #10 rounds; ½", ¾" or 1" flat wash; #4 script liner; paper towels; two water containers. Class and Surface Fee: \$50</p>	<p>Lights, Camera, Action You're A Star</p>
			
<p>5:00 – 10:00 PM</p>	<p>Dinner Break and Make It/Take It</p>		

Class Schedule

2012 Bluegrass Toler's Retreat,
Lake Cumberland State Park

Saturday, October 20, 2012

7:30 -
8:30 AM

Registration

9:00 AM -
4:00 PM
CLASSES
AND
LUNCH

#12 Gayle Laible, CDA
"Late for Dinner"
INT **Watercolor** - 6 hours
Materials Provided: 10 X 14 paper,
paint, palette, complete pattern,
photo, mat (14 X 18 mat plus
backerboard)
Need to bring: Brushes: #2, #4,
#6, #8, #10 rounds; 1/4", 1/2", 3/4"
flat wash; #2 script liner; paper
towels; two water containers; sea
sponges.
Class and Surface Fee: \$48



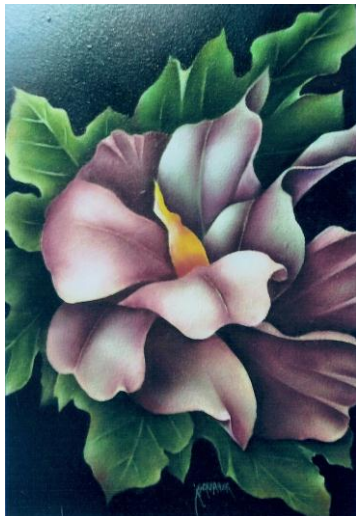
#14 Debbie McQueary
"Hydrangeas and Ribbon"
INT **Acrylic** - 6 hours
Materials Provided: 10" wooden
pedestal plate with glass, paint,
pattern, photo
Need to bring: Usual acrylic
supplies, including a good liner
brush and #4 and #6 filberts.
Class and Surface Fee: \$30



#16 Mina McLean
"Wren, Watering Can, Johnny
Jump Ups"
BEG **Color Pencil** - 6 hours
Materials Provided: 11 X 14
Mitentes paper, pattern, photo,
board to work on
Need to bring: Kneaded eraser,
white plastic, graphite, stylus,
prismacolor pencils
Class and Surface Fee: \$30
**See page 7 for deals on color
pencils.**



#13 Jude Creager
"Dorothy's Hibiscus"
BEG/INT **Oil** - 6 hours
Materials Provided: 8 X 10
panel, paint, pattern, photo,
paper towels, turp
Need to bring: Brushes: 1/4",
3/8", 1/2" angles, assorted small
soft mops, large soft mops
Class and Surface Fee: \$34



#15 Valerie Bernardino
"Peppers"
INT **Watercolor** - 6 hours
Materials Provided: 15" X 22"
surface, paint, pattern, photo
Need to bring: Usual watercolor
supplies
Class and Surface Fee: \$60



Lights, Camera, Action
You're A Star

5:00 -
10:00 PM

Break and Banquet (6 PM)

Biographies of Our Retreat Instructors

Valerie Bernardino

Valerie Bernardino has been involved in art and creative endeavors for most of her life, focusing on painting for the last 35 years and the medium of watercolor for over 20 years. She has taught acrylics and painting with silk dyes and spent 15 years hosting and teaching art on PBS and cable television. For the most part, Valerie is self taught but her love of watercolor has taken her on travels across the country to study with artists and learn new techniques and styles to enhance her artwork. She enjoys floral and scenic painting, and with the photographic skill of her husband has never been at a loss for subject matter. Valerie believes that painting has opened her eyes to the beauty of the world and it is her desire to share that beauty with you through her artwork.

Jude Creager

Judith Creager began drawing and painting at an early age. Her mother sent her to the Art Academy at the age of eight. She majored in art in high school; then, life, husband, children slowed her down. She did not draw or paint until sometime in the mid-seventies when she conducted an off-site art program in her home for eighth graders from a local school. This not-for-pay job was a great experience for both Jude and the kids. In fact, two of the students became relatives, one a step-daughter and one a daughter-in-law. In 1977, Jude then began taking oil classes from a local artist who conducted classes in her home. She now has her own art shop and teaches each week on Tuesday.

Mina McLean

She has always loved art and "doodling." She really got serious when she had her daughter and wanted to paint special clothes and other items for her. She started on her own and learned the hard way through "trial and error." Over the years she has been very fortunate to have painted under and with many great artists. She has strived to achieve some of the expertise each had. She loves art of all kinds; loves it even more sharing it with others and seeing the "light" come on in their eyes.

Debbie McQueary

Debbie has always had a love for art. She majored in Elementary Education at WKU and minored in Elementary School Art with an endorsement for teaching. She taught 4th and 5th grades for 28 years in the Hardin Co. School system. Although she taught art education for only one year, she incorporated art in all subjects. She was introduced to decorative painting in the early 90's and has been a member of the Society of Decorative Painters for over 20 years. Debbie was encouraged to teach her first class at the Bluegrass Toler's Retreat several years ago and has continued teaching painting classes since her retirement from public school. She has been married to her husband, Wendell, for 30 years and they have a daughter, Ashley who currently lives in Japan. She also has a step-daughter, son-in-law and 3 grandchildren who reside in Taylor Co.

Byrle Thomas

Byrle is an Army Brat whose father was Armor. She's lived all over the USA and 3 yrs. in Paris, France. She graduated from UK and has a Masters from Western KY. Byrle married her husband, Walker, 48 yrs ago and they have a 200 cow dairy farm. She taught school for 27 years. She has 3 grown children: Karen is a principal at Christ the King School in Lexington, Teresa is a lawyer in Elizabethtown, and Walker Jr. has his own farm and also farms with his father. She has 9 grandchildren, with the 2 oldest boys living with her and going to the local community college. The oldest granddaughter goes to college in Cincinnati and spends the summers with Byrle and Walker. She loves to paint.

Basic Supplies

<u>Acrylics</u>	<u>Oils</u>	<u>Watercolors</u>
Acrylic Brushes Palette Paper Palette Knife Paper Towels Water Container Pencil & Eraser Graphite Paper Tracing Paper	Oil Brushes Palette Paper Palette Knife Paper Towels Odorless Turpentine/ Baby Oil Graphite Paper Tracing Paper Table Easel	Watercolor Brushes 2 Water Containers Paper Towels Pencil Kneaded Eraser Graphite Paper Tracing Paper

Supplies for Mina McLean's Classes

Call Mina at 859/404-3471 or contact by email at mina.minasplace@gmail.com

Newberry Barn Painting

Dorothy Dent Brushes: Small Background (in place of #6 flat bristle)	\$ 8.95
Detail Flat (in place of #8 flat sable)	10.95
Twiggy Liner (in place of #1 sable liner)	10.95
	Sub-Total
	Tax
	Total

If ordered by 10/1, brushes will be \$27.00.

Langnickel P-12 Palette Knife (Long flat with rounded end) \$6.36 with tax

If ordered by 10/1, brushes and palette knife will be \$30.00.

Large bristle sky brush is optional but available. Call if interested.

If you bring your own paints, these are the ones we will use: Martin Weber oil colors-burnt sienna, burnt umber, cadmium orange, cobalt blue, cobalt turquoise, cadmium yellow medium, venetian red, yellow ochre, titanium white, liquiglaze, Winsor-Newton Griffin alkyd titanium white

For Both Pencil Classes

Panasonic battery operated sharpener (requires 4 AA batteries) Not a good idea to buy a regular sharpener because they don't sharpen correctly.	\$ 20.00
Battery operated erasers with 1/8" refillable eraser	15.00
Pencil stick erasers	about 3.00

If ordered by 10/1, there will be a 10% discount.

Horse Head Class

23 pencils @ \$1.71=\$39.33 tax \$2.36 total = \$41.69

If ordered by 10/1, they will be \$30; by 10/15 \$35. If you sign up for class and order pencils by 10/1, the cost is \$55 (no tax).

Wren, Watering Can Class

19 pencils @ \$1.71=\$32.49 tax \$1.95 total = \$34.44

If ordered by 10/1, they will be \$25; by 10/15 \$30. If you sign up for class and order pencils by 10/1, the cost is \$50 (no tax).

**BLUEGRASS TOLERS RETREAT - "LIGHTS, CAMERA, ACTION-YOU'RE A STAR"
REGISTRATION FORM**



Where: Lure Lodge at Lake Cumberland State Resort Park
Room Reservations 1-800-325-1709

When: October 17 - 21, 2012

Name: _____ SDP# _____

Address: _____

City: _____ State _____ Zip _____

E-mail: _____

**Registration Fee is \$40.00 for BGT members and \$60.00 for non-members.
One day registration is \$20.00 for members and \$30.00 for non-members.**

Return this registration form filled in with the classes you wish to take by September 30, 2012 with your registration fee (checks made to Bluegrass Toler).

Class Registration

List classes in order of preference by class number and title.

Example:

Thursday -

1st choice - Class Number #1 - Title - "The Dog and Cat"

2nd choice - Class Number #4 - Title - "The Birds"

	<u>1st Choice</u>	<u>2nd Choice</u>
	<u>Class Number and title</u>	<u>Class Number and title</u>

Thursday AM	_____	_____
Friday AM	_____	_____
Saturday AM	_____	_____

Do not enclose payment for classes, enclose money for registration only. When you attend a class, bring your teacher's payment in an envelope. Make all class checks payable to the teacher.

When sending your registration form, include your email address or self-addressed, stamped envelope for confirmation.

Please return to:

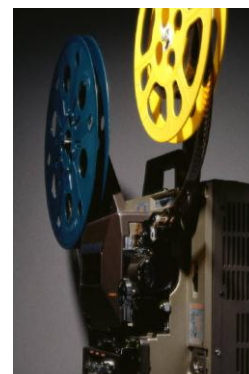
Marsha Clark

1300 Deerwood Drive

Frankfort, KY 40601

marshalclark@yahoo.com

502-545-3950



Keep one copy of the registration for your records.

- I want to reserve _____ Make It/Take It tables.

520 CHINOOK TR
FRANKFORT, KY 40601